

**TECHNICAL INFORMATION**

**TelstraClear Pacific  
Events Centre**



**GENESIS ENERGY THEATRE**

## Staging

### Stage Dimensions

Overall Width			24.5m
Overall Depth		Setting Line to Back Wall	11.0m
Proscenium	Height	Adjustable	6.25m – 8.5m
	Width	Adjustable	10.0m – 15.0m
Fixed Forestage	Height	Setting Line to Orchestra Pit	1.14m
	Width		15.000mm
Forestage / Pit	Width		12.0m – 15.0m
	Depth		2.04m
	Vertical Movement	Adjustable	2.890m

### Stage Rigging

Winch Suspension Sets	27	Max Loading 450Kg
Panorama Sets	2	Max Loading 300Kg
Hand-Line Suspension Sets	10	Max Loading 100Kg
Border Suspension Sets	6	Max Loading 35 Kg
Drop-Line Suspension Sets	20	Max Loading 50Kg

<b>Batten Length</b>	Winch Sets	18,000mm
	Panorama Sets	9,800mm
	Hand-Line Sets	18,000mm

<b>Batten Type</b>	Winch Sets	75mm x 50mm RHS
	Panorama Sets	75mm x 50mm RHS
	Hand-Line Sets	125mm x 40mm Laminated Timber

<b>Accessories</b>	Batten Extensions	12
	Lighting Ladder Tracks	2
	Leg Extensions	10

### Stage Drapes

Main Curtain Pelmet	1	Hung on Batten	Velour	450gms m2	Red
Main Curtain	1pr	Centre Opening Track	Velour	450gms m2	Red
Main Curtain Backing	1pr	Hung on Batten	Backing	450gms m2	Black
Masking Tabs	1pr	Hung on Battens	Velour	350gms m2	Black
Masking Borders	5	Hung on Battens	Velour	350gms m2	Black
Masking Legs	5pr	Hung on Battens	Velour	350gms m2	Black
Side Masking Borders	2	Hung on Battens	Velour	350gms m2	Black
Cyclorama	1	Hung on Battens	Filled Cloth		White

## Theatre Sound

- The Theatre sound system is a full - Left, Centre, Right system
- Central vocal clusters as well as delay rings and separate fill / down fill systems are provided
  - Supplementary systems such as Sub Bass & Foldback are available

The system is suitable for both speech & live music & can deliver in excess of 105 db SPL

<b>Speakers</b>	L & R Clusters	Meyer CQ1, CQ2 powered 15" speakers
<b>Sub Bass</b>	2	Meyer 650P Dual 18" Sub Woofer
<b>Central Cluster</b>	Meyer UPA 1 P & UPM 1 P	Powered Speakers
<b>Delay Ring</b>	Meyer UPA 1 P & UPM 1 P	Powered Speakers
<b>Fill Systems</b>	Meyer MM4	4" Speakers
<b>Foldback</b>	EV Powered Speakers – SX Series	10
<b>Console</b>	Midas Venice	32 x 4 x 2
<b>Processing</b>	Klark Technic DN360 EQ Media Matrix DSP	FOH & FB FOH
<b>Outboard Equipment</b>	Numark Pro CD Player (Dual) DI Boxes Shure ULX Radio Microphones SM58 Mic Mic Stands	2

### Communication System

<b>4 Ring Industry standard Clear Com System</b>	
MS440 Master	2
RS 501 Beltpacks	20
CC95 Single Muff Headset	20
HS6 Handsets	2
Outlets	30

## Audio Patching

Full patching is included with tie lines (200+)

Stage L, Stage R, Stage Rear L&R, Pit, Lighting Bridges & Control Room



## Stage Lighting

<b>Console type</b>		Strand 520i or Strand 300
<b>Dimmers</b>		84 Expandable
<b>Data Systems</b>		DMX512 & Ethernet
<b>Load Patching</b>	Type	Custom Patch Lead
	Circuit No's	386 Lighting Circuits
<b>Portable Dimmer Supply</b>		240amp(Power Lock) x 3 Phase (On Stage)
<b>Luminaires</b>		
Strand SL Zoom Profile	15 – 32 deg	15
Strand SL Zoom Profile	23 – 50 deg	15
Fresnel	1.2Kw	24
P.C.	1.2Kw	24
Parcans	1Kw	20
Top Cyc-Lights	Selecon 4cell	8
<b>Spot Bars</b>	Pre Wired	4
	Loomed	1 (Cyc)

### **General Operations:**

At all times when lighting is used a suitable Multi Media Technician will operate or oversee the use thereof.

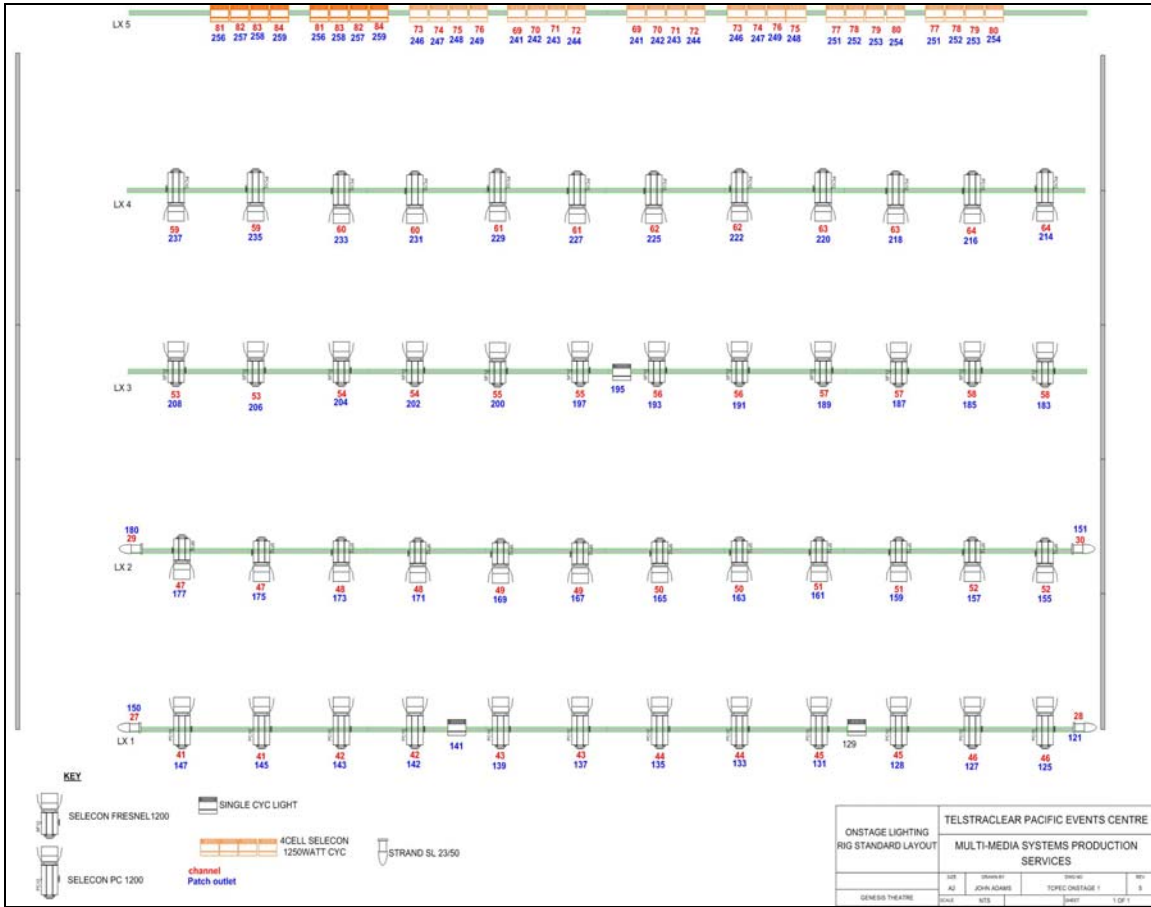
### ***Houselights***

House Lights are controlled from the control panel on stage or in the Theatre control room or they can be patched to DMX.

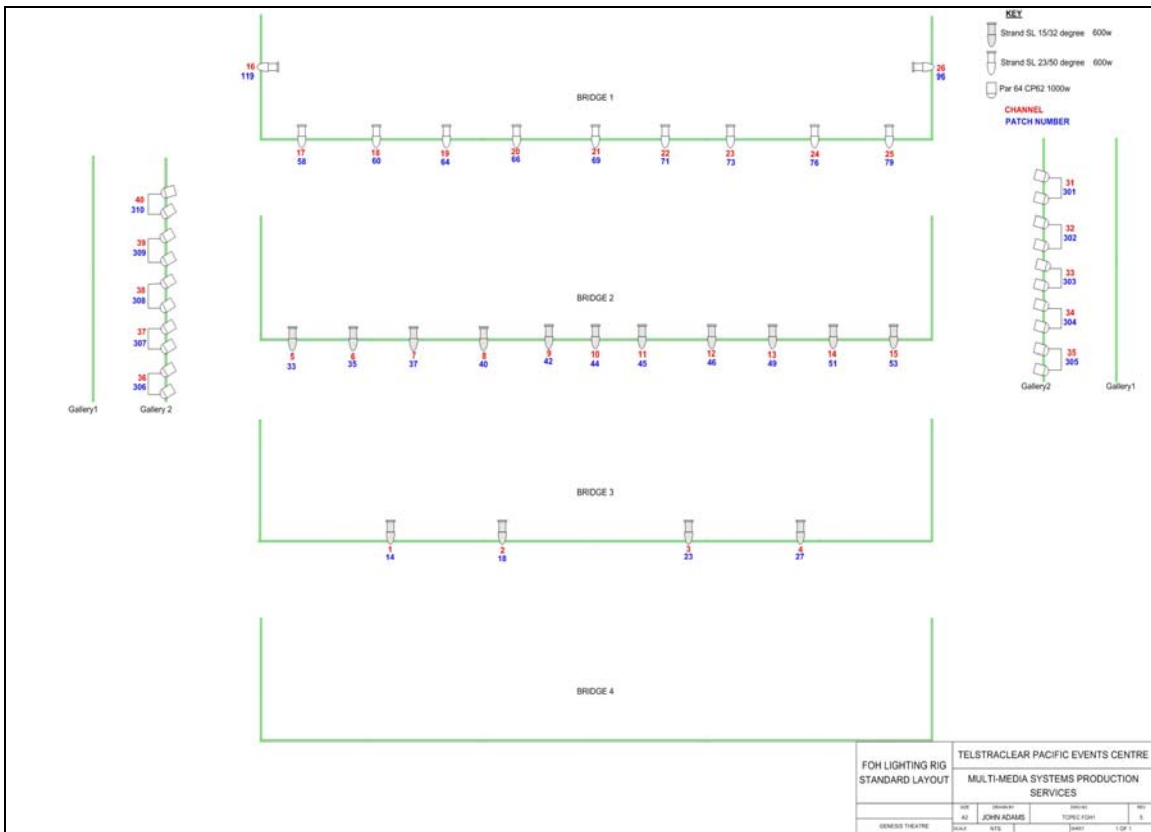
Houselights consist of PAR64 CP95 & PAR56 (Wide)

Work lights are provided on a live switch panel

# Stage Lighting Rig



# Front Of House Lighting Rig



**\*\*\*None of the above items are included in Venue Hire**

**\*\*\*Any changes to the standard rig will either be reinstated by the client or the client will be charged for the time taken to reinstate.**

**This is not an exhaustive list; please contact us for your event specific requirements.**

